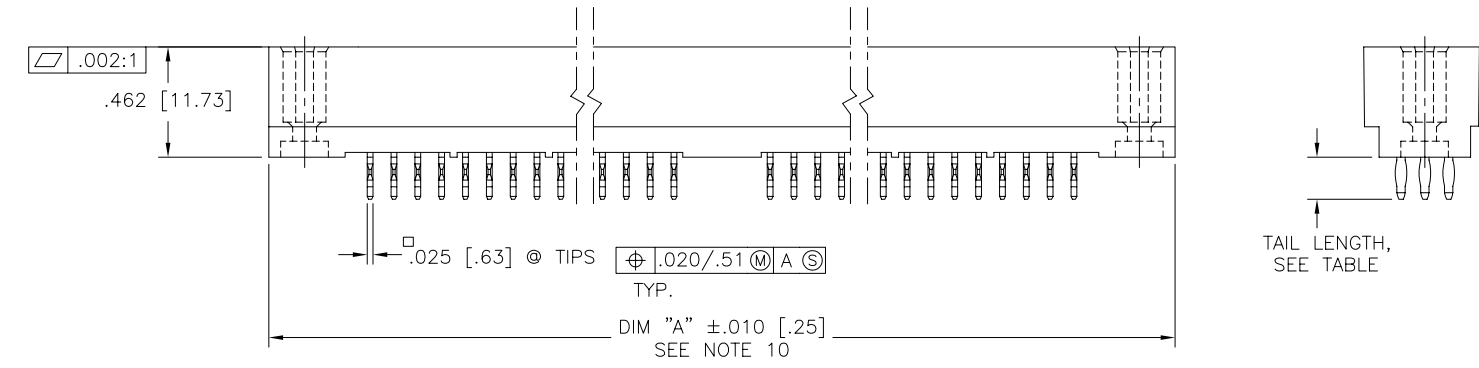
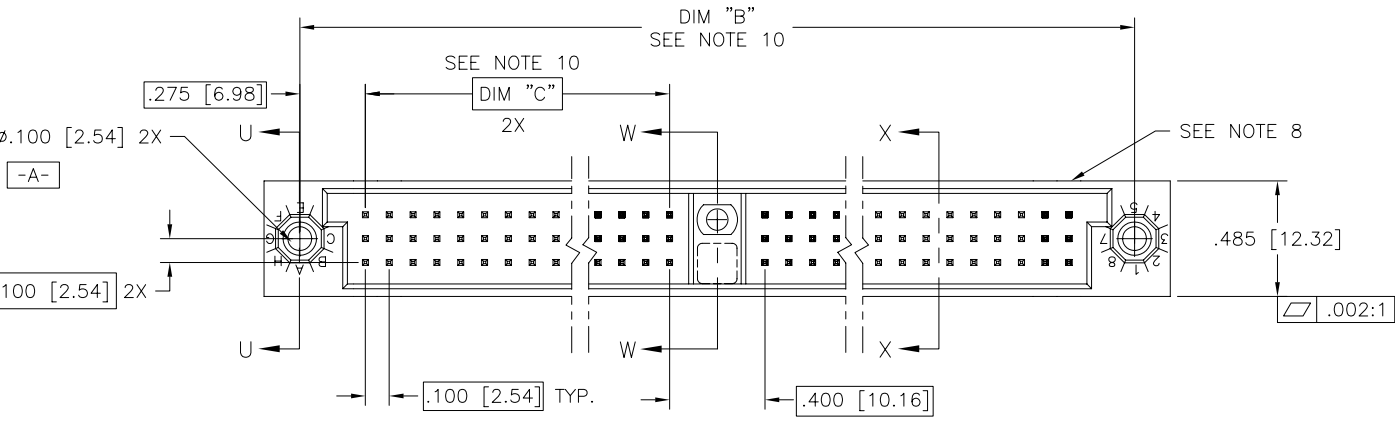


PRODUCT NUMBER
SEE TABLE ON SHEET 2, AND NOTE 1



mat'l. code SEE NOTE 3		surface ISO 1302 ✓		tolerance ISO 406 ISO 1101		projection ⊕		product family HPC	
ltr	ecr	no	dr	date	tolerances unless otherwise specified			title	
J	v05-0787	DCH	8/17/05	8/17/05	angles	.xx±.01/.3		3 ROW VERTICAL HEADER	
K	v05-0999	DAI	10/29/05	10/29/05	linear	.xxx±.005/.13		W/PRESS-FIT PINS, 1 G.P.	
L	M06-0283	MHT	7/27/06	7/27/06	0'±2'	.xxxx±.0020/.051		scale 1:1	
		dr		D.HORCHLER	8/17/05		dwg no		sheet 1 of 2 size
		enr		T.BREWBAKER	8/17/05		50007		A3
		chr		T.BREWBAKER	8/17/05		type		Product Customer Drawing
		appd		T.BREWBAKER	8/17/05				
sheet index	revision sheet	L	L						
	1	2							

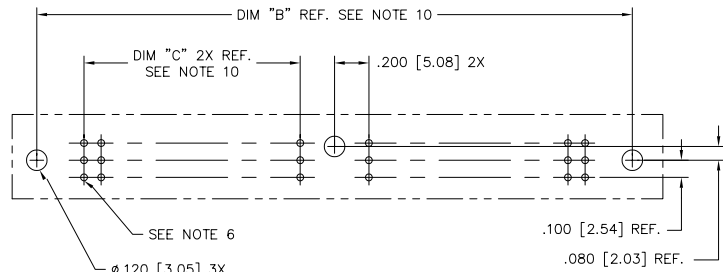


Copyright FCI

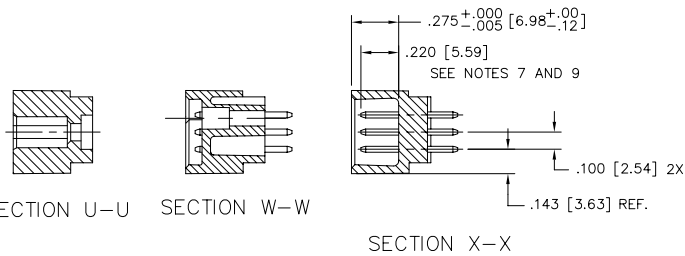
PRODUCT NUMBER	TERMINAL PLATING	TAIL LENGTH ±.015/.38
50007-1YYA	30u"/0.76u Au	.177/4.50
50007-1YYC	30u"/0.76u Au	.533/13.54
50007-1YYD	30u"/0.76u Au	.733/18.62
50007-1YYG	30u"/0.76u Au	.250/6.35
50007-1YYL	30u"/0.76u Au	.188/4.78 FOR .062" PCB
50007-1YYP	30u"/0.76u Au	.470/11.94 FOR .062" PCB/SHROUD
50007-3YYA	50u"/1.27u Au	.177/4.50
50007-3YYC	50u"/1.27u Au	.533/13.54
50007-3YYD	50u"/1.27u Au	.733/18.62
50007-3YYG	50u"/1.27u Au	.250/6.35
50007-3YYL	50u"/1.27u Au	.188/4.78 FOR .062" PCB
50007-3YYP	50u"/1.27u Au	.470/11.94 FOR .062" PCB/SHROUD
50007-5YYA	30u"/0.76u GXT	.177/4.50
50007-5YYALF	30u"/0.76u GXT	.177/4.50
50007-5YYC	30u"/0.76u GXT	.533/13.54
50007-5YYCLF	30u"/0.76u GXT	.533/13.54
50007-5YYD	30u"/0.76u GXT	.733/18.62
50007-5YYDLF	30u"/0.76u GXT	.733/18.62
50007-5YYG	30u"/0.76u GXT	.250/6.35
50007-5YYGLF	30u"/0.76u GXT	.250/6.35
50007-5YYL	30u"/0.76u GXT	.188/4.78 FOR .062" PCB
50007-5YYLLF	30u"/0.76u GXT	.188/4.78 FOR .062" PCB
50007-5YYP	30u"/0.76u GXT	.470/11.94 FOR .062" PCB/SHROUD
50007-5YYPLF	30u"/0.76u GXT	.470/11.94 FOR .062" PCB/SHROUD

NOTES:

- ① PRODUCT NUMBERING CODE:
 50007 - X YYY Z LF
 X: LEAD FREE (OPTIONAL)
 YYY: TAIL LENGTH SEE TABLE
 Z: NO. OF POSITIONS SEE NOTE 2
 LF: PLATING SEE TABLE
 BASE NUMBER
- PRODUCT NUMBERING CODE FOR SELECT LOAD PART NUMBERS:
 50007 - XYYYY LF
 X: LEAD FREE (OPTIONAL)
 YYYYY: SEQUENCE NUMBER
 ALWAYS 'XX'
 BASE NUMBER
- ② THIS PRODUCT IS CONFIGURED IN SIZES OF 20 thru 122 COLUMNS IN INCREMENTS OF TWO.
 i.e.: 20,22,24,26,.....118,120,122.
- ③ HOUSING MATERIAL: GLASS AND MINERAL FILLED HIGH TEMP. THERMOPLASTIC. FLAME RETARDANT PER UL94V-0. COLOR: BLACK.
 PIN MATERIAL: PHOS BRONZE
4. THIS PRODUCT (WITH "LF" SUFFIX) MEETS EUROPEAN UNION DIRECTIVES AND OTHER COUNTRY REGULATIONS AS DESCRIBED IN GS-22-008.
5. THIS HOUSING WILL WITHSTAND EXPOSURE TO 260 DEGREES C PEAK TEMPERATURE FOR 10-30 SECONDS IN A CONVECTION, INFRA-RED OR VAPOR PHASE OVEN.
- ⑥ ϕ .0453/1.151 DRILLED HOLE PLATED WITH .0003/.007 MIN. SnPb OVER .001/.03 to .003/.08 Cu. PLATING TO ACHIEVE A ϕ .040±.003/1.02±.08 HOLE.
- ⑦ TO ASSURE PROPER INSTALLATION: TOOLING, AS SPECIFIED IN INSTRUCTION MANUAL 155915-001 MUST BE USED. PIN MATING LENGTH WILL BE ±.002/.05 AFTER INSTALLATION.
- ⑧ COMPANY NAME, PART NUMBER AND LOT CODE TO APPEAR ON THIS SURFACE PER BUS-12-108.
9. REFERENCE 50808 FOR F.M.L.B. AVAILABLE OPTIONS AND WORKSHEET.
- ⑩ LENGTH DIMENSION FORMULAS:
 DIM "A" = .100/2.54 x NO. OF COLUMNS + 1.05/26.7
 DIM "B" = .100/2.54 x NO. OF COLUMNS + .750/19.05
 DIM "C" = .100/2.54 x NO. OF COLUMNS - .100/2.54



RECOMMENDED PCB LAYOUT
 (ALL HOLES LOCATED ON .100/2.54 GRID UNLESS OTHERWISE SPECIFIED)



mat'l. code SEE NOTE 3		surface ISO 1302 ✓	tolerance ISO 406 ISO 1101	projection INCH/MM	product family HPC
ltr	ecn	no	dr	date	title
L					3 ROW VERTICAL HEADER W/PRESS-FIT PINS, 1 G.P.
					dwg no sheet 2 of 2 size
					50007 A3
					type Product Customer Drawing
sheet index	revision sheet				